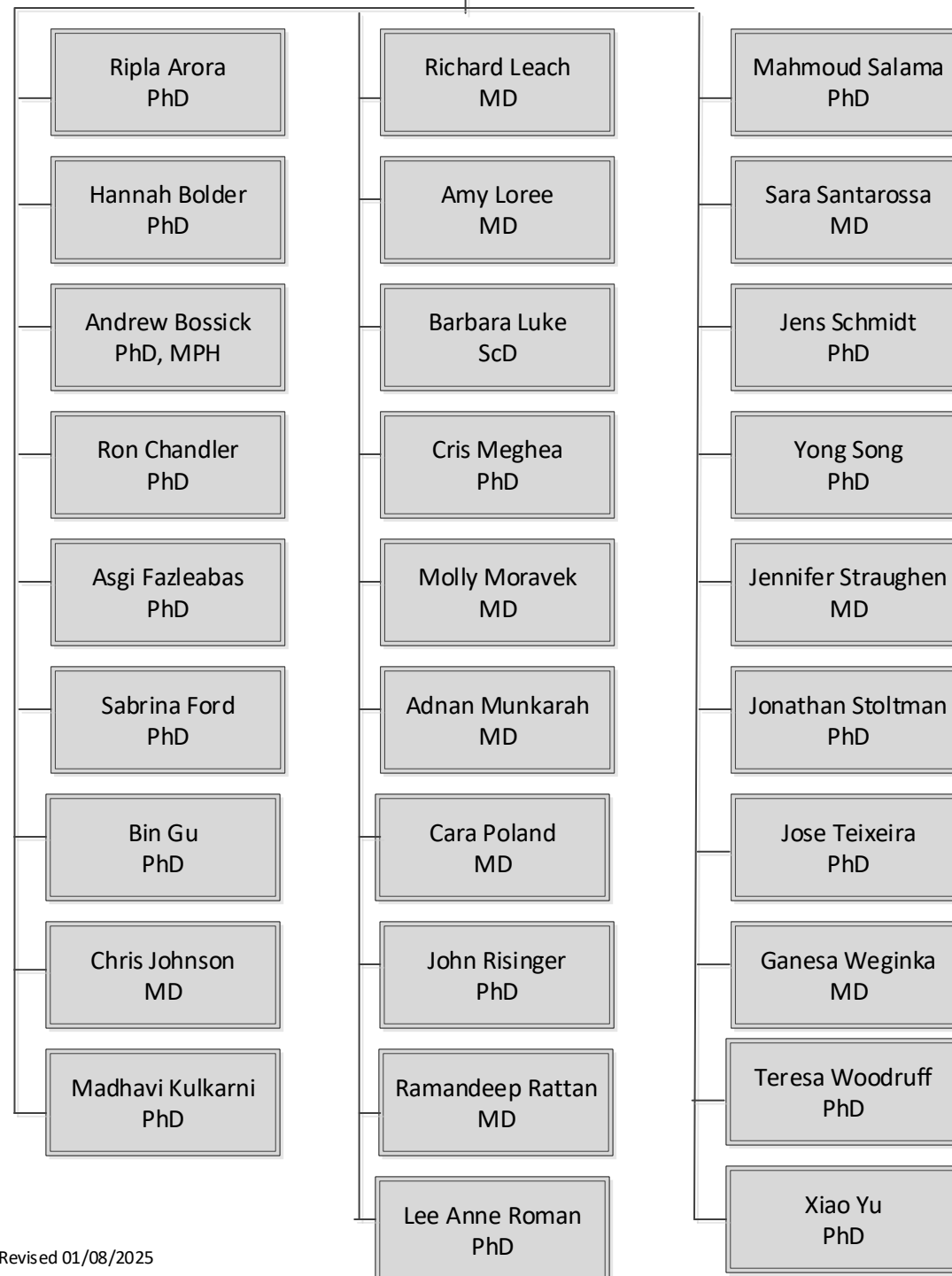


Michigan State University

College of Human Medicine
Department of Obstetrics, Gynecology and Reproductive Biology
Grand Rapids, East Lansing, and Flint

Richard E. Leach, MD
Professor and Chair

Research

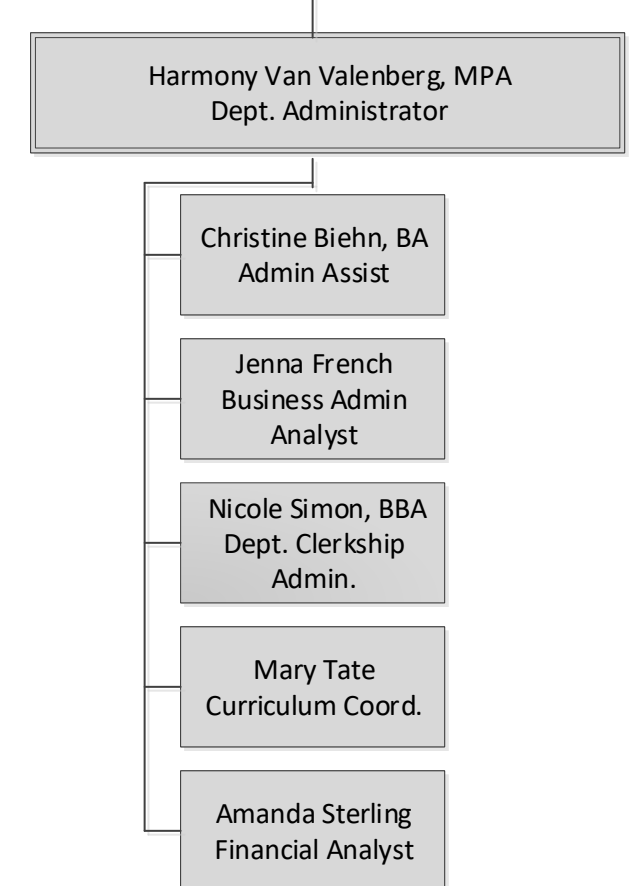


Education



Clinical

Administration



Michigan State University

College of Human Medicine
 Department of Obstetrics, Gynecology and Reproductive Biology
 Grand Rapids, East Lansing, and Flint

Richard E. Leach, MD
 Professor and Chair

Research

