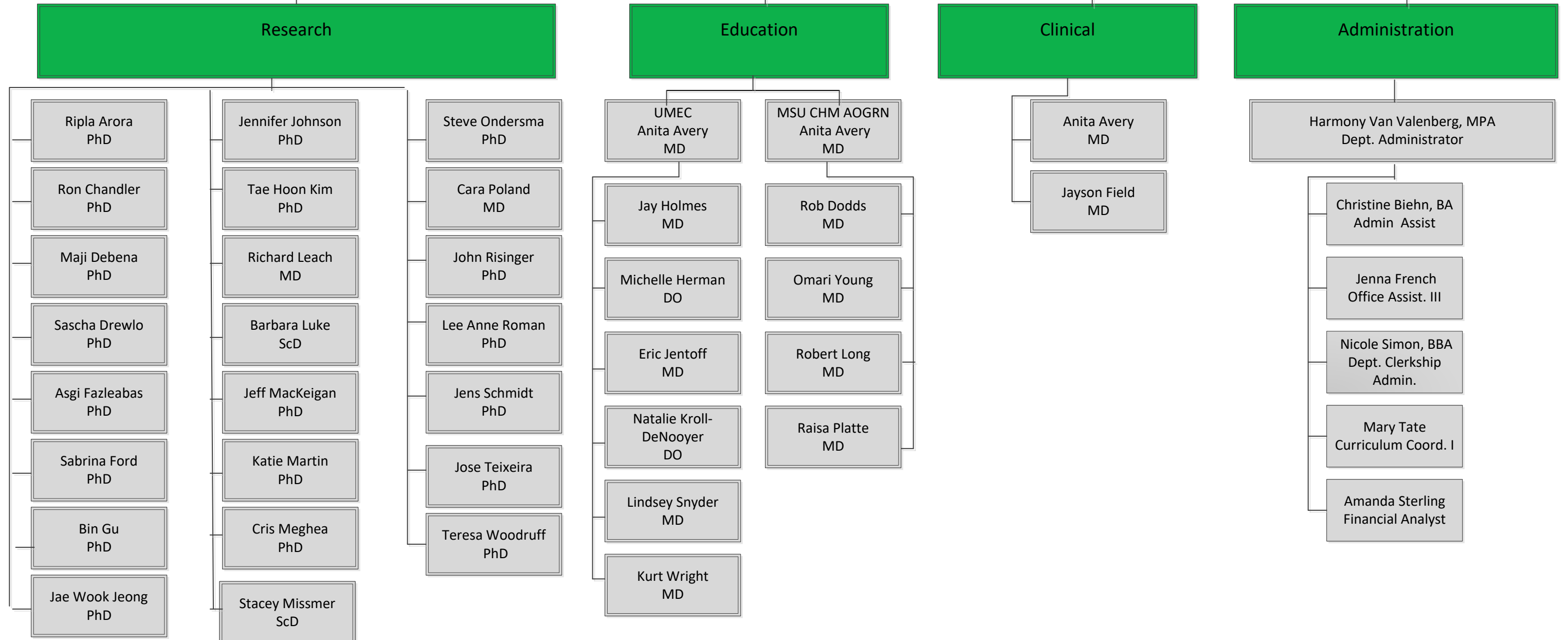


Michigan State University

College of Human Medicine
Department of Obstetrics, Gynecology and Reproductive Biology
Grand Rapids, East Lansing, and Flint

Richard E. Leach, MD
Professor and Chair



Michigan State University
 College of Human Medicine
 Department of Obstetrics, Gynecology and Reproductive Biology
 Grand Rapids, East Lansing, and Flint

Richard E. Leach, MD
 Professor and Chair

Research

